

# BearExtender PC

## Windows 7 Guide

---

### Step 1: Install Software



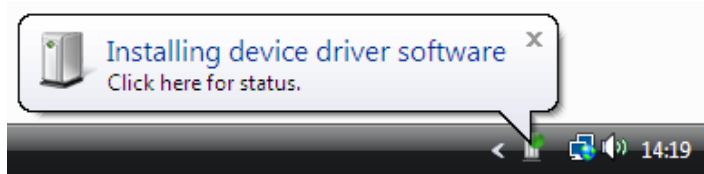
**Do not connect BearExtender PC's USB cable**  
If you have already connected it, please disconnect it.

Insert the CD-ROM into your computer.  
When the Autorun menu appears, click "Windows 7".



It may take up to 30 seconds for the Autorun menu to appear, depending on the speed of your CD drive.

If the Autorun menu does not appear, Navigate to your CD drive, then right-click it and select "Open." Then double click the Setup program to begin.



Once the software has installed, connect BearExtender PC's USB cable directly to your computer. A popup will appear in the bottom right corner of your screen. A second popup will confirm that the installation has completed.

## Step 2: Disable your Built-in Wi-Fi card



If your computer has a built-in Wi-Fi card, please disable it.

Some laptops have a ON/OFF switch for disabling the built-in Wi-Fi card. If your computer does not have a switch, go to Control Panel > Network and Sharing > "Change Adapter Settings".

Then right-click your built-in Wi-Fi card and click "Disable." You can repeat this step and select "Enable" when you wish to use your internal Wi-Fi card again.

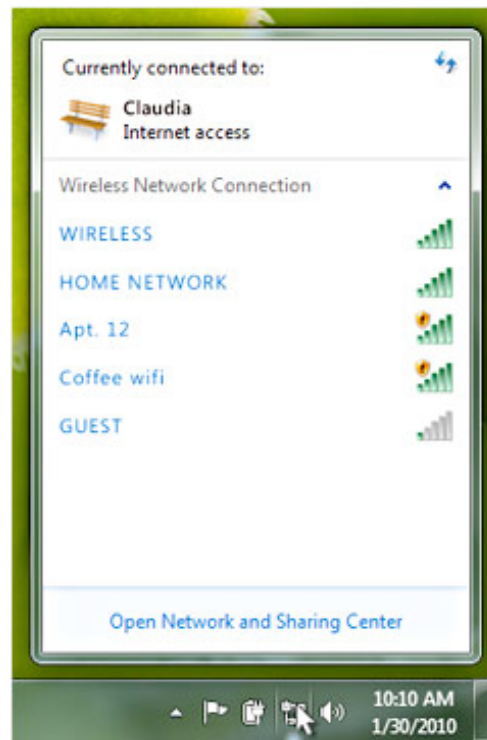
## Step 3: Scan and Join a Network

Because BearExtender PC uses the built-in Windows 7 interface for connecting to wireless networks, there is no new software to learn.

Simply click on the Network icon located in the bottom right corner of your screen (  or  ).

A list of nearby networks will appear.

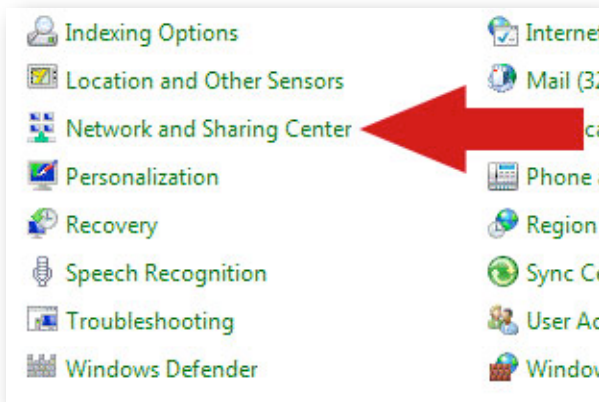
Select your network and click "Connect." You will be asked for a password if required.



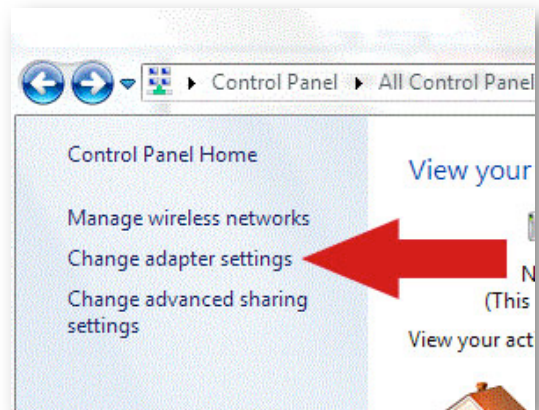
Click the Network icon near the clock so show nearby networks.

If you are unable to locate the Network icon, follow these steps:

1. Go to Control Panel
2. Click "Network and Sharing Center"
3. Click "Change adapter settings"
4. Then right-click "802.11n Wi-Fi adapter" or "Wireless Connection 2" and select "Connect/Disconnect"



*The digit after "Wireless Network Connection" may vary if you have previously had other Wi-Fi adapters installed on your computer.*



## Congratulations

You have finished setting up BearExtender PC.

If you need additional help, please see the Troubleshooting section or contact us using the information at the end of this guide.

## Troubleshooting

1. I do not see any connection icon in the bottom right of my screen, and when I follow the instructions to go to the device in the Network and Sharing center I am not able to see the device there either.

Be sure you have run the Setup program from the CD in its entirety. If you have, and BearExtender PC is connected to your computer, please contact BearExtender support for further assistance.

2. The specifications for this product say 150 Mbps max speed, but the Connection Status tab reports that I am only connected at 54 Mbps, why?

This most likely means you are connected to an 802.11g router. To achieve speeds above 54 Mbps you must be connected to an 802.11n router. Depending on how your 802.11n router is set, you may connect above 54 mbps but below 150 Mbps.

For information on how to maximize transfer speeds by adjusting your router settings for optimal 802.11n performance, please contact BearExtender support. Please be sure to include your Wireless Router brand and model number.

3. When scanning for networks I see the exact same number of networks and the same signal strength compared to my internal WiFi card. How can this be?

There are two possible issues here. First, if you have not disabled your internal Wi-Fi card per this instruction manual, Windows is still using your internal card to scan for network connections. So even though BearExtender PC may be connected to your computer, your computer is not using it. Please follow the steps outlined in Step 2 of this document to ensure your internal card is disabled.

If you have confirmed your internal network card is disabled, the other possibility is there may not be any other Wi-Fi networks in range. Unlike 3G/cellular data service, which you have to pay for, Wi-Fi does not have a monthly service fee but you do need to be within range of a wireless network in order to use it.

If there is only one signal around you for several thousand feet, and it is ten feet away from you, both your internal WiFi card and BearExtender will probably detect it at close to 100% signal, but it may be the only network that either can detect.

This does not mean BearExtender PC is getting the same range as your internal card, it simply means there are no more signals within range of either device.

## Contact Us

Email support is available 24 hours a day, 7 days a week.  
The average response time is 6 to 12 hours.

[Support@BearExtender.com](mailto:Support@BearExtender.com)

Email support is the fastest way to reach us, and most issues can be resolved over email.